



# 2300 16<sup>TH</sup> STREET NW

WASHINGTON, DC

MIC LOBBY RELOCATION

April 18, 2018

Perkins Eastman DC



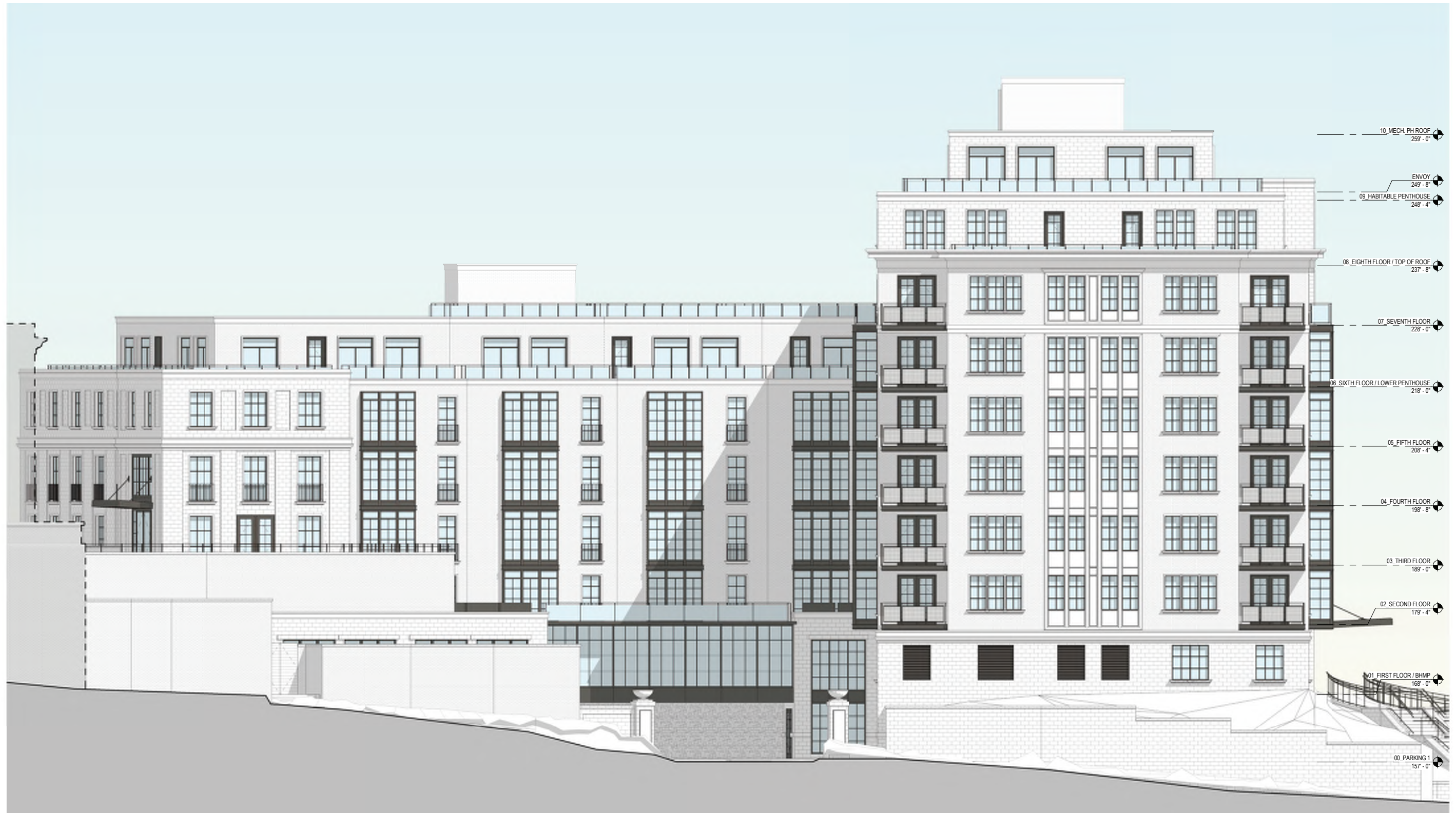
# SOUTH ELEVATION\_ MASSING AS APPROVED BY HPRB



SCALE: 1/16" = 1'-0"



# SOUTH ELEVATION\_ MIC LOBBY RELOCATED



SCALE: 1/16" = 1'-0"



# WEST ELEVATION\_ MASSING AS APPROVED BY HPRB



10. MECH. PH ROOF  
259'-0"

09. HABITABLE PENTHOUSE  
248'-4"

08. EIGHTH FLOOR / TOP OF ROOF  
237'-8"

07. SEVENTH FLOOR  
226'-0"

06. SIXTH FLOOR / LOWER PENTHOUSE  
218'-0"

05. FIFTH FLOOR  
208'-4"

04. FOURTH FLOOR  
198'-8"

03. THRD FLOOR  
188'-0"

02. SECOND FLOOR  
179'-4"

01. FIRST FLOOR / BHMP  
168'-0"

SCALE: 1/16" = 1'-0"

# WEST ELEVATION\_ MIC LOBBY RELOCATED



SCALE: 1/16" = 1'-0"